



CleanPowerSF Update

PUC Citizens' Advisory Committee
Power Subcommittee

June 11, 2019

CleanPowerSF



Agenda

- Growth Plan Update
- Proposed Commercial Renewable Energy Targets

Growth Plan Update

CleanPowerSF Enrollment Status

- With April enrollment complete, now enrolled >400,000 customer accounts citywide
- 3.3% opt-out rate (97% retention) since launch
- 1.6% SuperGreen upgrade rate representing $\approx 4.0\%$ of annual energy sales

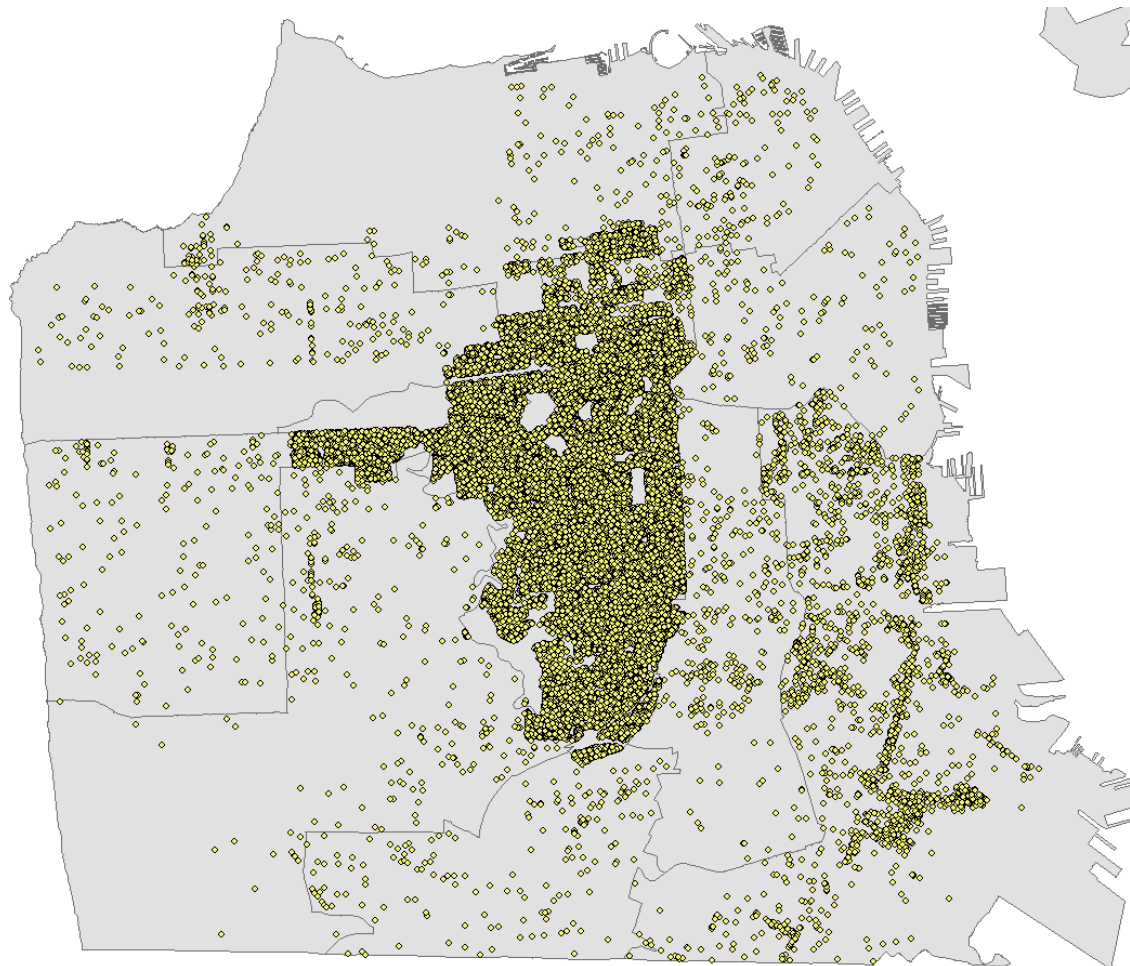


我們的城市, 我們的能源。 CleanPowerSF.org



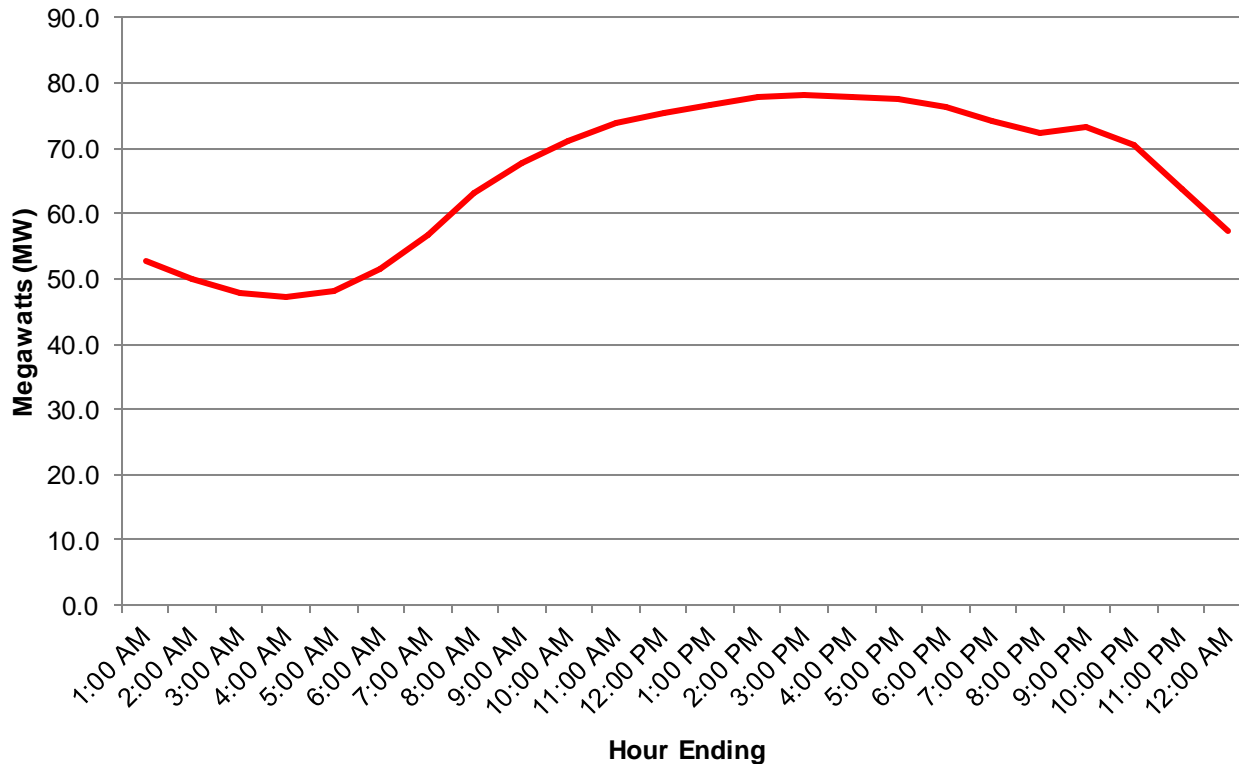
CleanPowerSF Enrollment

Before July 2018 Enrollment





CleanPowerSF Load Shape Before July 2018 Enrollment





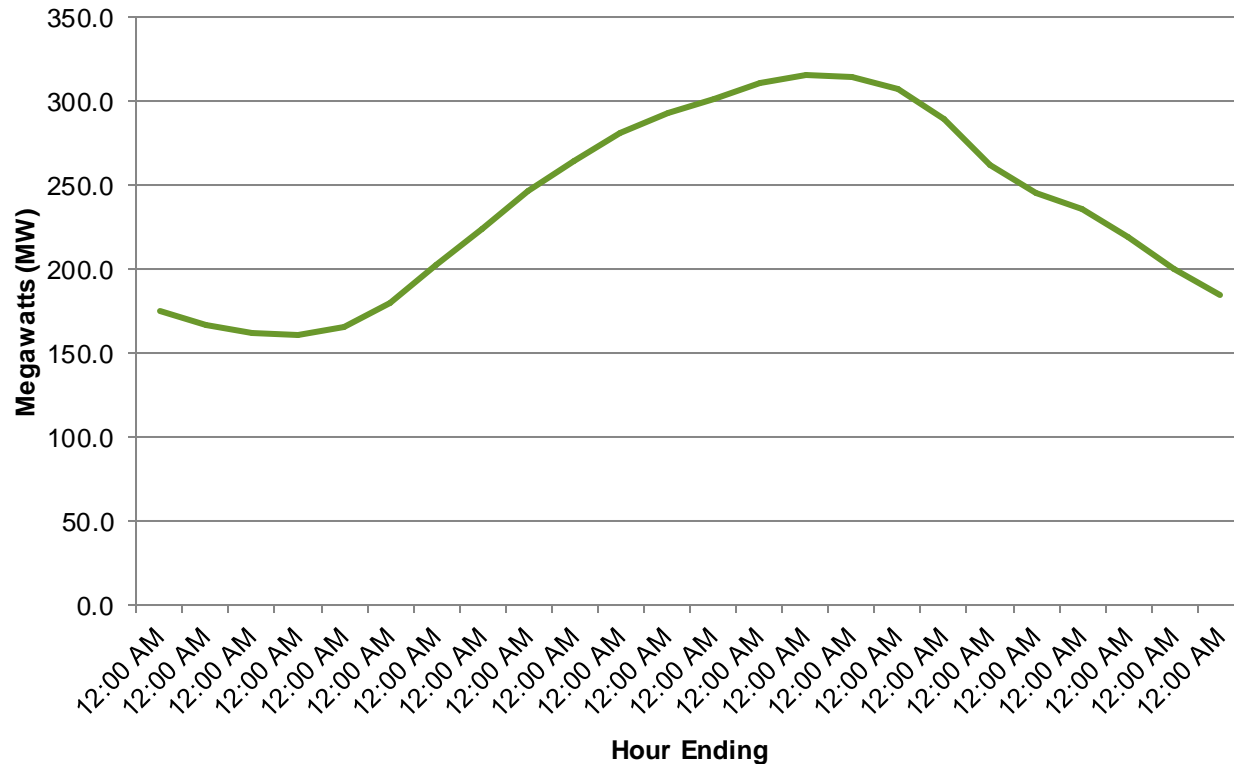
CleanPowerSF Enrollment

After July 2018 Enrollment





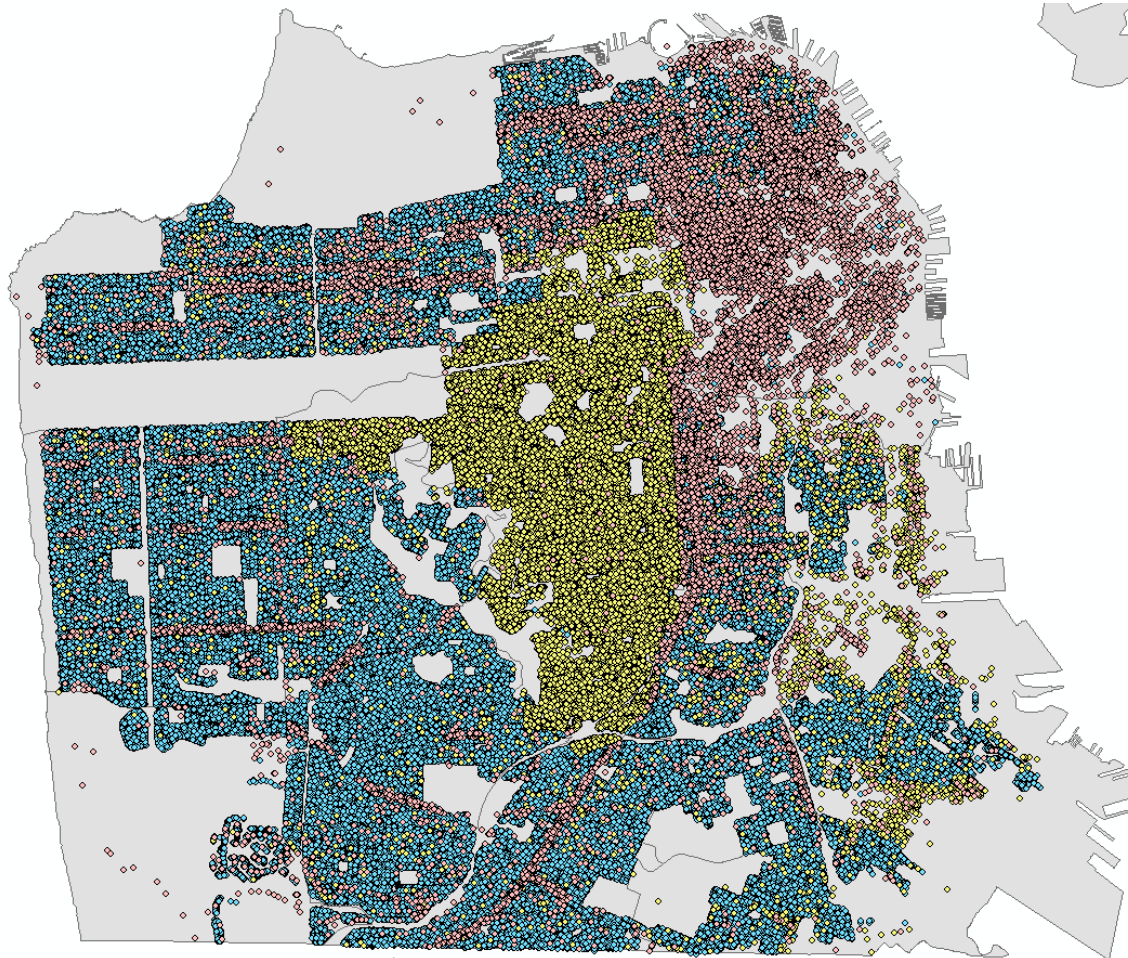
CleanPowerSF Load Shape After July 2018 Enrollment





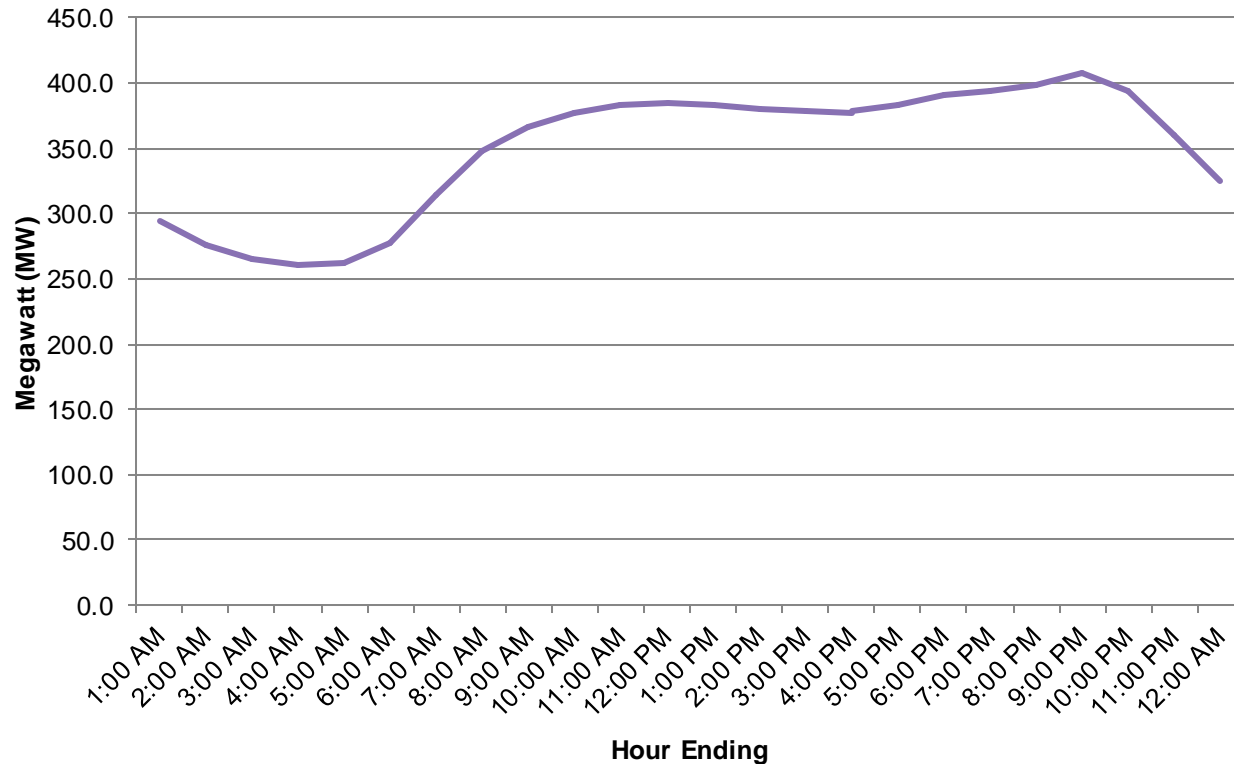
CleanPowerSF Enrollment

After April 2019 Enrollment



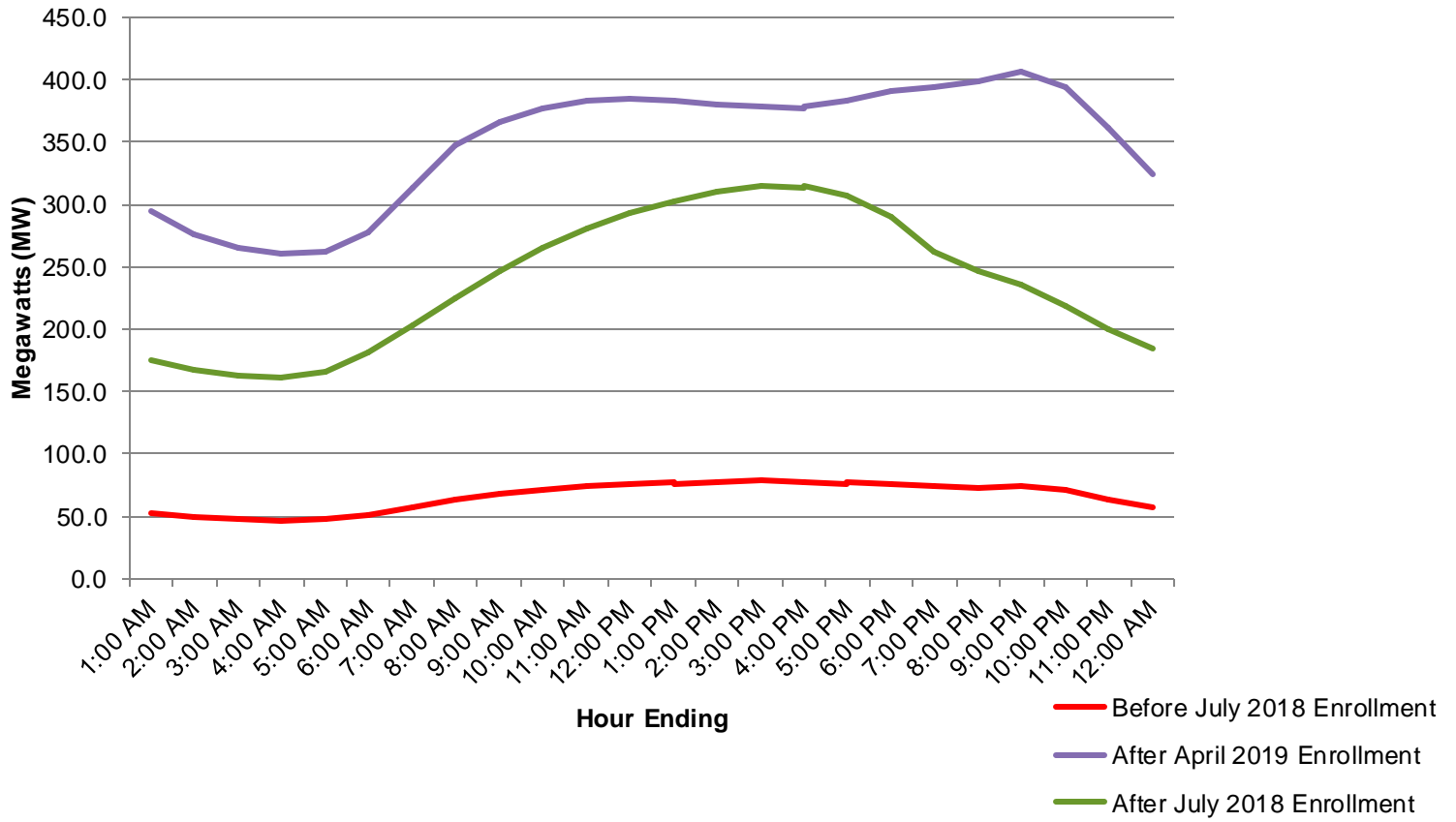


CleanPowerSF Load Shape After April 2019 Enrollment





CleanPowerSF Load Shape Before and After Recent Enrollments



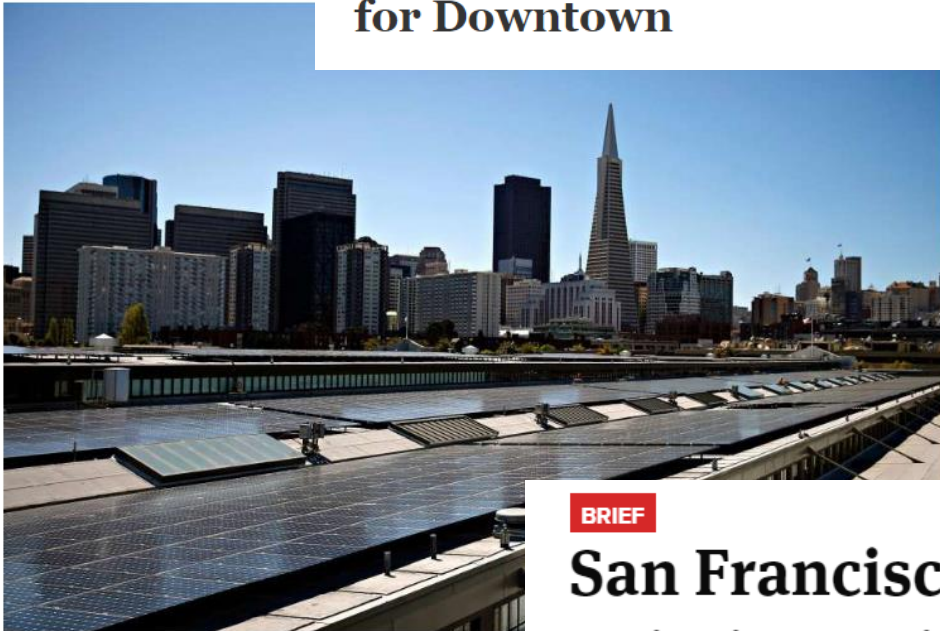
Proposed Commercial Renewable Energy Targets

Earth Day Announcement

SF's big buildings to take big step in reducing city's emissions

 **Dominic Fracassa** | April 22, 2019

San Francisco Mayor Unveils 100 Percent Renewable Power Plan for Downtown



BRIEF

San Francisco to power commercial buildings with 100% renewables

Energy Buildings

Year	Size (sq ft.)	Number of Buildings	Energy %
2022	500,000	50	22%
2024	250,000+	166	40%
2030	50,000+	732	65%

All buildings
source their

electricity from resources that are 100% renewable and/or GHG-free.

- Schedule depends on size of building
 - 500,000 square feet and above by the end of 2022
 - 250,000 square feet and above by the end of 2024
 - 50,000 square feet and above by the end of 2030

Go 100% renewable today!
Visit: www.cleanpowersf.org

CleanPowerSF

Same Service • Cleaner Energy



San Francisco
Water
Power
Sewer